

## Newport Lakes Conservation & Development Plan (Draft):

### FoNL Response

Our response takes the form of direct comment on the action points proposed in Section 12 (Implementation).

#### WATER QUALITY

W1	Support
W2	Support
W3	Support
W4	Support
W5	FoNL strongly supports the conversion of one of the lakes to an ephemeral wetland. We consider water management issues of preeminent importance. FoNL can see merit in conversion of the northern lake, as the plan suggests but, at this point, the majority of the committee favour conversion of the southern lake. Given that this is a proposal for the longer term we would like to revisit this issue in much greater depth at the relevant time.
W6	See W5

#### RECREATION

R1	Support
R2	Support
R3	Do Not Support. We feel that, while understandable, the entrance on Johnson St is halfway down the total length of the reserve and therefore, this is too much of an encroachment into the conservation area of the reserve.
R4	Do Not Support.
R5	Support
R6	Ambiguous. Will the path be inside or outside the existing fence line? See R8.

R7	The issue of play and recreation facilities and their location is of primary importance to FoNL. We support the installation of a fitness station, basketball court and a nature play / flying fox type facility but we feel very strongly that any new recreational infrastructure of this type should be located in a 'recreation' precinct away from the existing car park, as close to Graham St as possible. This area of Newport Lakes is sufficiently large that, with good design, it should be possible to accommodate all this infrastructure appropriately there.
R8	Do Not Support removal of the chain link fence. It is not the most attractive feature but provides a vital barrier to encroachment upon the conservation area, and the protection of species within it. Improvements could be made to the appearance and maintenance of the fence (gates in particular). Support signage in lines with new HBCC guidelines.
R9	Do Not Support removal of the chain link fence. FoNL strongly opposes this. Removal would be highly detrimental to conservation/habitat area and against stated aims for Newport Lakes as stated in key objectives and goals (see 6.6 especially 6.6.1 pages 39/40 of draft report).
R10	Support, but only if the installations are in the Pavey Park area.
R11	Support in principle, but further detail needed. Would an app using geolocation be better?
R12	Qualified Support. FoNL does not want to see large, or noisy events requiring power supply held in close proximity to the conservation area. Many other locations within Hobson's Bay would be much more suitable.
R13	Support
R14	Support
R15	Support
R16	Support

#### VEGETATION MANAGEMENT

V1	Support
V2	Support
V3	Support
V4	Qualified support, if this entails keeping the existing fence.
V5	Support
V6	Support
V7	Support

#### MAIN VISITOR FACILITIES IMPROVEMENTS

1	Support
2	Support
3	Support

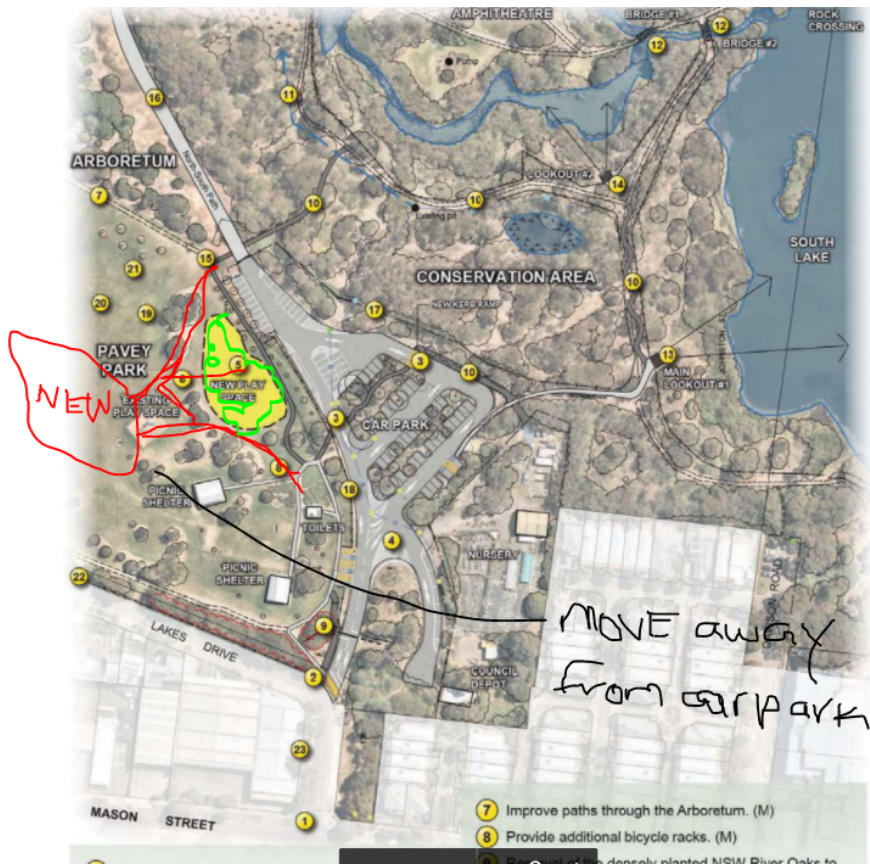
4	Support
5	Support
6	Support
7	Support
8	Support
9	Support but would prefer mature trees not be removed.
10	Support
11	Support
12	Support
13	Support
14	Support
15	Support
16	Support
17	Support
18	Support
19	Support
20	See R12
21	Support
22	Support
23	Support

#### FURTHER COMMENT

**Ingrid:** Support plans for vegetation management. Would prefer new play space further into Pavey park away from conservation area. Strong support for key objective of protection for key environmental values and maintaining balance between biodiversity and habitat conservation values and community use cited in 12.

**Gayle:** I despair that the area is being turned into an entertainment venue not a mindful reflective walking area for people (in the conservation area) and people and dogs in the community dog area. The idea that there be a busy playground right near the current car park is a major worry - keep the playground where it is, build another shelter with BBQs at that end to spread the impact of more people and with families with children who want to use the playground. Create a sensory walk from the car park to the expanded and upgraded area on Graham Street – to encourage family walking along an attractive pathway that winds down to the playground – promoting movement, exercise and interaction.





**Gaida:** Many of the proposed changes such as the removal of fencing, addition of paths and reclassification of parts of the conservation area of the reserve, combined with substantial new play and recreational areas adjacent to the car park, are potential threats to the existing ecosystem and the health and protection of species in the conservation area of the reserve. This is particularly concerning given the imminent arrival of thousands of new residents in close proximity, on Blackshaws Rd. Creating a recreation hub in the western area of Pavey Park would provide a much better balance between recreation and conservation. Perhaps a secondary car park could be located there to service the recreation area? There are other parks and recreation areas within 400 metres (reflecting upon the principle outlined in Hobson's Bay Open Space Strategy) of Newport Lakes and elsewhere, both in Newport and Altona North, that could be further developed (including the park directly opposite Newport Lakes on Mason St). Distributing recreational facilities across the suburb would also make better sense, in the long term, with respect to parking and congestion, given that many people who might be within walking distance of a recreation location, will still choose to drive. We are so fortunate to have a reserve centrally located in Hobson's Bay, where native and indigenous species of flora and fauna are thriving. As thousands in the local area would agree, protecting it is paramount. To this end, at the appropriate juncture I would like to see rezoning to better reflect the conservation, biodiversity and green value of the conservation area.

